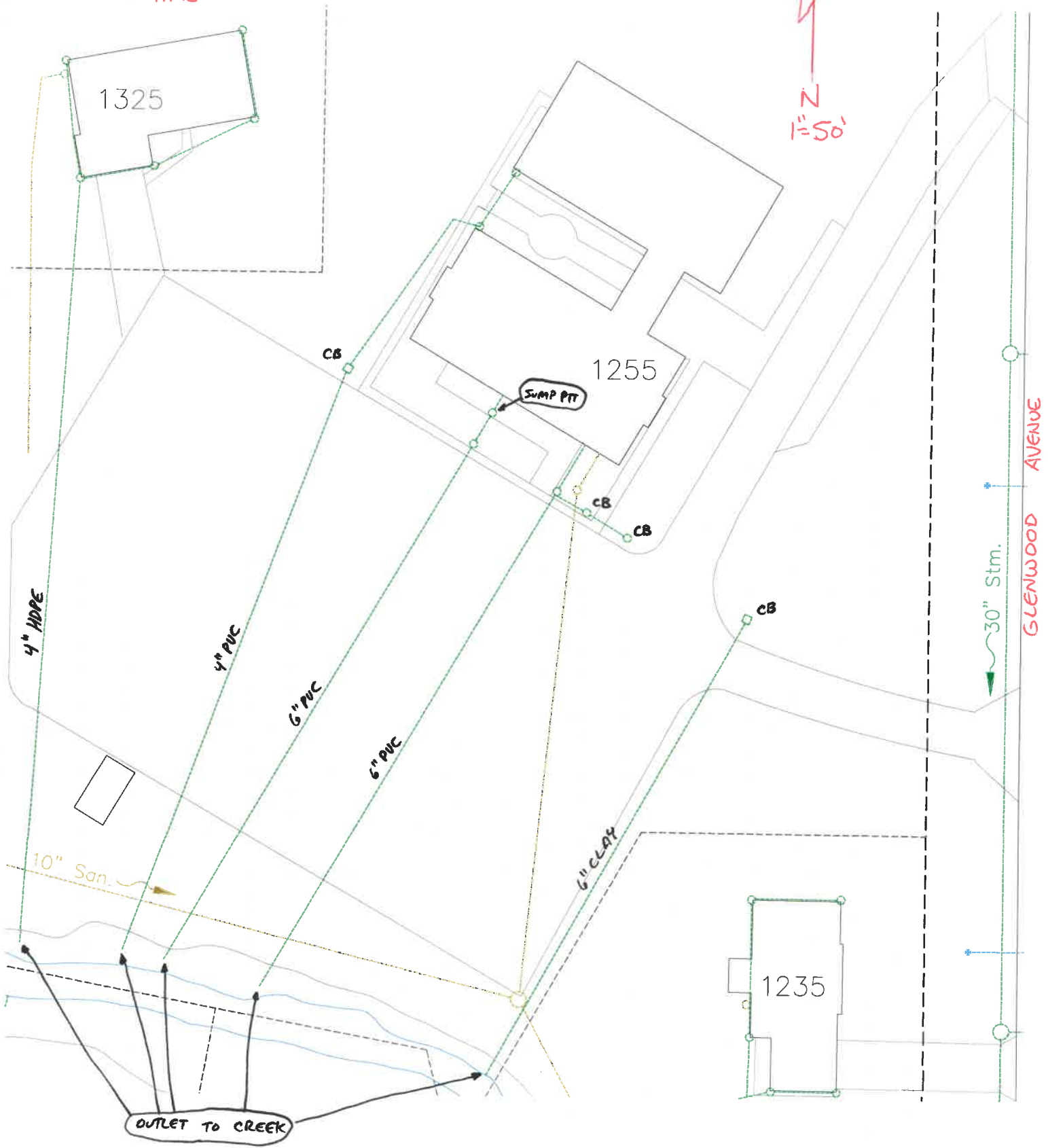


2015
INVESTIGATION OF ILLEGAL SEWER
CONNECTIONS, DYE TESTING CONFIRMED
NO CROSS CONNECTIONS EXIST. ALL
CONNECTIONS ARE IN COMPLIANCE
AT THIS TIME

1255 + 1325 GLENWOOD
AVENUE



2015

1255 GLENWOOD AVENUE

